

eyeon®

KANAZAWA

Special Kaga City Edition

English-Language Magazine

Autumn / Winter
2025-2026

03

Where to Get the Full Onsen Experience in Kaga City

Hot Springs &
Attractions in One Ticket



"eyeon® DIGITAL" is now available!

www.eyeon.jp



Where to Get the Full Onsen Experience in Kaga City

Only 18 minutes from Kanazawa Station by Shinkansen, Kaga is known for its historical significance and seasonal cuisine. More importantly, it's home to some of the most distinctive onsens in the country. It's hard to pick a favorite among the three main onsen towns. One is a nature lover's paradise; another is a haven for history buffs, and the third is a feast for the eyes and stomach. If you asked the locals, each would proudly boast about their own onsen.



Yamashiro Onsen Soyu



I intend to find out for myself. So, we'll begin at Kagaonsen Station Tourist Information Centre. You can purchase a helpful Onsen Passport there, and it gives you unlimited CANBUS rides and includes three Soyu (public bathhouse) vouchers, perfect for my investigation.

Exploring the Three Onsen Towns

Yamashiro Onsen 21

Japan's connection to onsens goes back thousands of years. Emperors and monks believed hot spring water was sacred and medicinal. In fact, Yamashiro Onsen—like many others—is still believed to have healing properties. The Ko-soyu is a time capsule from the Meiji period (1868-1912), faithfully rebuilt based on the original 1886



Yamashiro Onsen Ko-soyu



CANBUS Kaga Tour Bus
You can discover Kaga with CANBUS. Starting from Kagaonsen Station, it makes a circuit of the sightseeing spots around the three onsen towns.



bathhouse. With colorful glass panels and Kutani-yaki porcelain tiles, it represents a blend of Japanese and Western architecture. However, such historical accuracy means there are no modern showering facilities. It's best to shower beforehand (either at your ryokan or a nearby bathhouse) or bathe directly in the onsen. I found the water just right.

Katayamazu Onsen 12

There is a long-standing Japanese tradition of drinking coffee milk after a soak, but why not opt for a coffee set instead? At Katayamazu Onsen, you might mistake the bathhouse for a library. Designed by renowned architect Yoshio Taniguchi, the minimalist, brutalist



Katayamazu Onsen Soyū



structure offers private views of either the lake or the garden, depending on the layout that day. Despite its modern design, it feels just as authentic as any traditional onsen. I came for the soak but stayed for the cafe on the second floor.

Writer / Model

Nejam Abderrahmane (Abdo) is a Moroccan storyteller and content writer who has published work with Food and Wine, CBR, The Daily Dot, and more

Onsen vs. Non-Onsen Baths

You might assume that all public bathhouses and baths at ryokans (Japanese-style inns) in Japan use onsen water, but that's not always the case. If a bath doesn't specifically mention 'onsen,' it likely uses regular hot water, rather than water from a natural hot spring. Both types of baths are enjoyable, but onsen baths offer extra health benefits, thanks to their rich mineral content.

Health Benefits of Soaking in an Onsen Bath

Onsen refers to Japan's natural hot springs, which are rich in minerals that offer a variety of physical and mental health benefits. In Kaga City, the onsen waters are said to help with muscle pain, fatigue, burns, cuts, skin conditions, gastrointestinal issues, insomnia, depression, and more. Drinking the onsen water may enhance these effects even further.

Yamanaka Onsen 19

It's easy to forget that without nature, onsens wouldn't exist. Yamanaka Onsen, a traditional mountain village, symbolizes co-existence with nature. Whether through foraged mountain vegetables or hand-lacquered crafts, locals treasure the gifts of their environment. This is why the bath at Yamanaka Onsen is so simple. With fewer distractions, you naturally slip into a meditative state. This stillness honed my patience, and the hot water grounded me. After 10 minutes, I found a deeper appreciation for the mountain.



Machi-Cafe (Katayamazu Onsen Soyū)

Staying at a Ryokan to Fully Experience Onsen Culture

One city, three onsens, each unique and memorable. Yamashiro Onsen is a living historical landmark; Katayamazu Onsen is a futuristic bathhouse, and Yamanaka Onsen is an indoor mountain retreat. It's hard to choose a favorite. I need more time. Perhaps a longer stay at a ryokan—relishing local cuisine and immersing myself in all that Kaga offers—is the only way to find out.

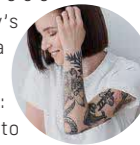


Ayatorihashi Bridge (Yamanaka Onsen Kakusenkei Gorge)

USEFUL INFORMATION

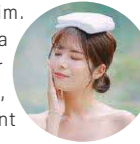
Tattoo-Friendly

Visitors with tattoos are welcome at the public onsen (called soyu) in Kaga City. While some onsen facilities elsewhere in Japan still restrict entry for tattooed individuals due to the historical association of tattooed *yakuza* (Japanese gangsters), Kaga City's public baths take a warmer, more inclusive approach: everyone is welcome to enjoy the experience.



Towel Rule

You can bring your own towel or purchase one onsite. Please avoid placing your towel in the bath; instead, rest it on the tub's rim. Many visitors place a small towel on their heads while soaking, which can help prevent dizziness.



This time, the three public baths were visited.



Yamashiro Onsen Soyu and Ko-soyu Public Bathhouse
Open: 6:00-22:00 / Fee: Soyu 500 yen (Ko-soyu 700 yen) / Closed: 6:00-12:00 on the 4th Wednesday of each month / Local Bus Stop: Yamashiro Onsen / CANBUS Stop: #21 (Mountain Route)



Yamanaka Onsen Kiku no Yu Public Bathhouse
Open: Daily 6:45-22:00 / Fee: 500 yen / Closed: Occasionally, and on the 2nd & 4th Tuesdays (open on national holidays) / Local Bus Stop: Yamanaka Bus Terminal or Kiku no Yu Mae / CANBUS Stop: #19 (Mountain Route)



Katayamazu Onsen Soyū Public Bathhouse
Open: Daily 6:00-22:00 / Fee: 500 yen / Closed: Occasionally / Local Bus Stop: Katayamazu Onsen Soyū Mae / CANBUS Stop: #12 (Sea Route)



Hot Springs & Attractions in One Ticket



The Kaga Onsen-kyo Passport is the perfect way to explore Kaga City. This great-value pass allows you to visit three attractions in one day, including public hot springs. If you plan to travel to two or more spots by bus, the CANBUS Ticket Set makes your journey even more convenient and economical.

Where to purchase this passport?

You can purchase passports at the Information Centre on the first floor of Kaga Onsen Station. Here, you can find out about the best ways to use your passport and receive useful tips.



Kaga City Tourist Information Centre
Kaga Tabimachi Net
in the Kagaonsen Station
Tel.076-72-6678
Open 8:45 to 17:30
CANBUS: ①
KAGA 旅ま5ネット

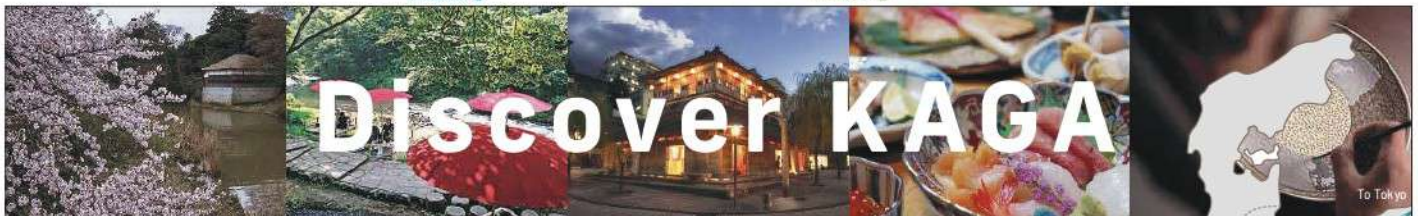


Red Passport 1,000yen
including entrance fee for 3 facilities

Red Passport 1,800yen
including entrance fee for 3 facilities
plus CANBUS tickets
(1 day unlimited ride ticket)

Discover 22 facilities included with the Kaga Onsen-kyo Passport

Onsen Enjoying a tour of hot springs	<p>Katayamazu Onsen Soyu Open 6:00 to 22:00 CANBUS: ②→50m</p>	<p>Yamashiro Onsen Soyu Open 6:00 to 22:00 CANBUS: ②→100m</p>	<p>Yamashiro Ko-soyu Open 6:00 to 22:00 (Dec.-Feb.: 7:00 to 21:00) CANBUS: ②→100m</p>	<p>Yamanaka Onsen Kiku no Yu Open 6:45 to 22:00 CANBUS: ③</p>	<p>Kaga Yume no yu Open 6:00 to 0:30 am CANBUS: ②→2.4km</p>	<p>Bessho Onsen Open 11:40 to 21:30 CANBUS: ③→1.9km</p>
	Crafts Experience traditional crafts	<p>Rosanjin's Cottage Iroha Soan Open 9:00 to 16:30 CANBUS: ②→150m</p>	<p>Kutaniyaki Art Museum Open 9:00 to 16:30 CANBUS: ②→100m</p>	<p>Kaga City Art Museum Open 10:00 to 17:30 CANBUS: ①→50m</p>	<p>Mugen-An Open 11:00 to 15:00 CANBUS: ③→950m</p>	<p>Kataoka Tsurutaro Art and Craft Gallery Open 10:00 to 15:30 CANBUS: ③→100m</p>
History Exploring the History of Kaga		<p>Basho no Yakata Open 9:00 to 16:30 CANBUS: ③→150m</p>	<p>Kitamaebune Ship Museum Open 9:00 to 16:30 CANBUS: ⑤→100m</p>	<p>Zorokuen Open 9:00 to 17:30 CANBUS: ④</p>	<p>Jisshoin Temple Open 9:00 to 16:00 CANBUS: ②→500m</p>	<p>Kaga Iryokuen Open 10:00 to 17:30 CANBUS: ③→450m</p>
	Others Becoming familiar with history and culture	<p>Fukata Kyuya Memorial Museum Open 9:00 to 16:30 CANBUS: ③→300m</p>	<p>Nakaya Ukichiro Museum of Snow and Ice Closed until March 2026 CANBUS: ③</p>	<p>Tsukiusagi no Sato Open 9:00 to 16:00 CANBUS: ③</p>	<p>Traditional handicraftsvillage "Yunokuni no Mori" Open 9:00 to 16:00 CANBUS: ③</p>	<p>Motorcar Museum of Japan Open 9:00 to 16:30 CANBUS: ③</p>



Discover KAGA

Stretching from the Sea of Japan's curving coastline up into rugged, mountainous terrain, impossibly picturesque Kaga City enjoys the best of all worlds. Flourishes of the area's rich historical, cultural and artistic heritage are everywhere to be seen. From relaxing hot springs and magnificent vistas, to natural wonders and the freshest seafood around, Kaga offers it all.

Kaga
Kaga City Tourism Association
Shinkansen: Kagaonsen Station
Phone: +81-(0)761-72-7906
kokusai@city.kaga.lg.jp
<https://visitkaga.jp>
Instagram: visit.kaga.area



18 mins by Shinkansen from Kanazawa!

